



Amy泳池服务团队  
[amyservice.ca](http://amyservice.ca)



联系电话: 5146048126(Amy)

---

## 官 健

Amy泳池服务团队药剂师, 主要负责水质平衡及泳池使用培训. 曾供职西人泳池服务公司, 现场经验丰富. 精通泳池系统相关设备的维修维护以及水质平衡处理.

---

## 团队简介

Amy泳池服务团队由前Trévi业务经理Amy Shi于2019年秋组建, 现有全职工程维修保养队员4人, 主要从事公共及私人泳池的修建与维护保养业务, 包括修建泳池, 更换泳池liner, 安装和维修泳池设备, 泳池保养, 调节水质等. 曾多次帮助客户处理政府勒令整改的棘手问题, 受到客户的一致好评.



# 春季开池及日常养护

主讲人: 官 健

Amy泳池服务团队药剂师, 负责泳池系统相关设备的维修维护以及水质平衡处理.







# 提 要

---

泳池构造及运行机理

---

常见设备使用及维护

---

开池步骤

---

深度清洁

---

水质平衡

---

日常养护





# 泳池构造及运行机理



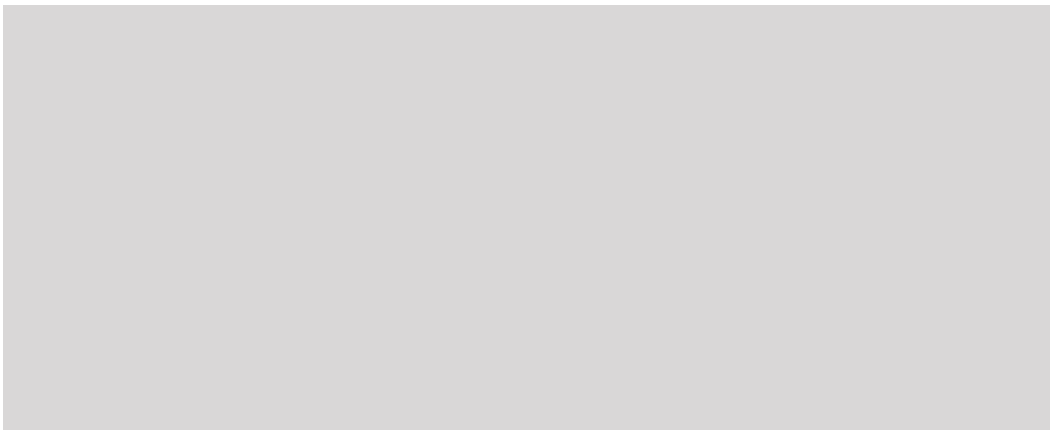


Aboveground Pool

&

Inground Pool













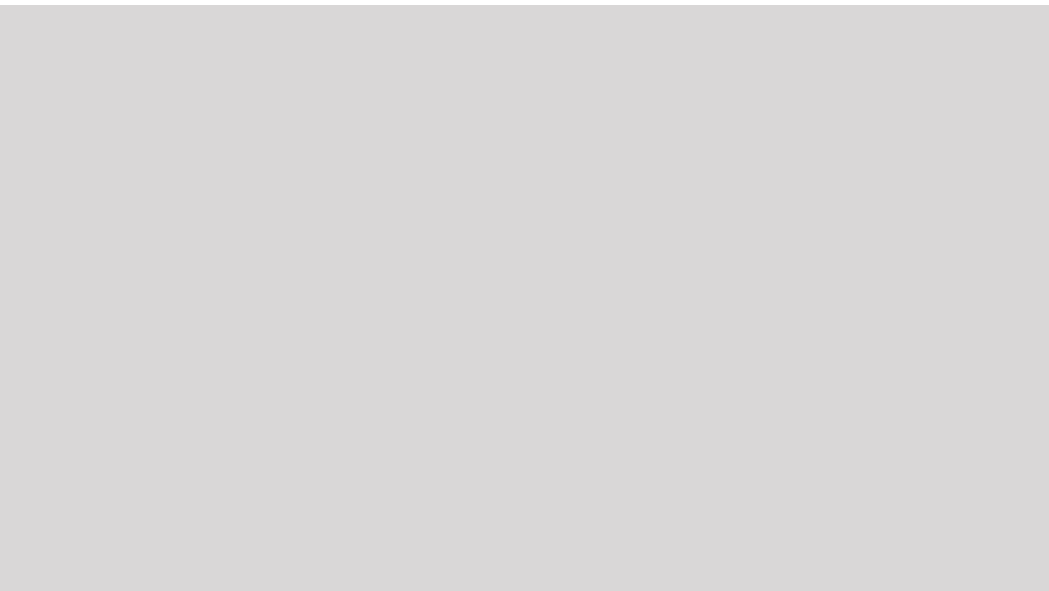
















STEP 1: Empty your pool and





# Chlorine Pool

VS

# Salt Pool

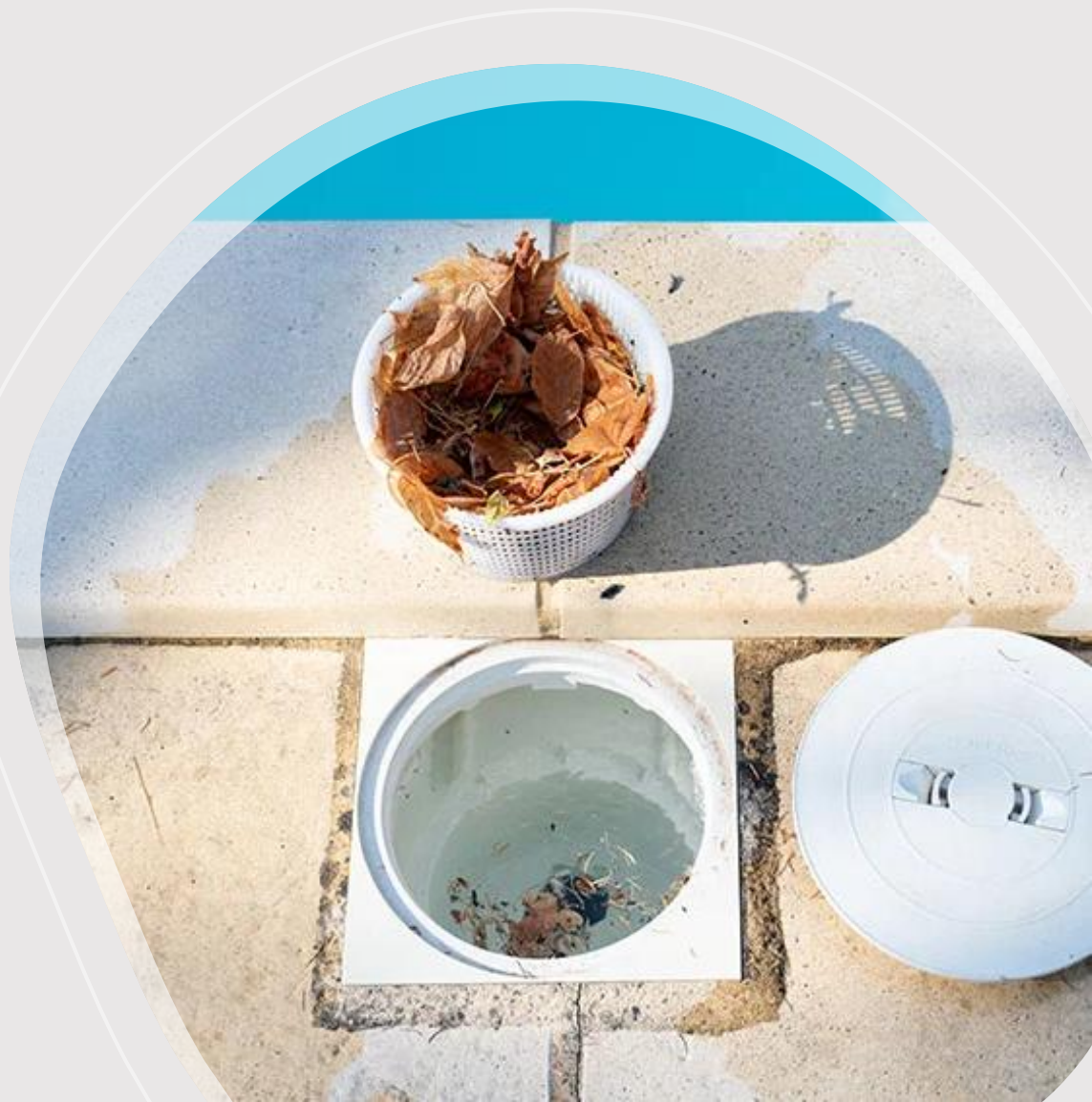




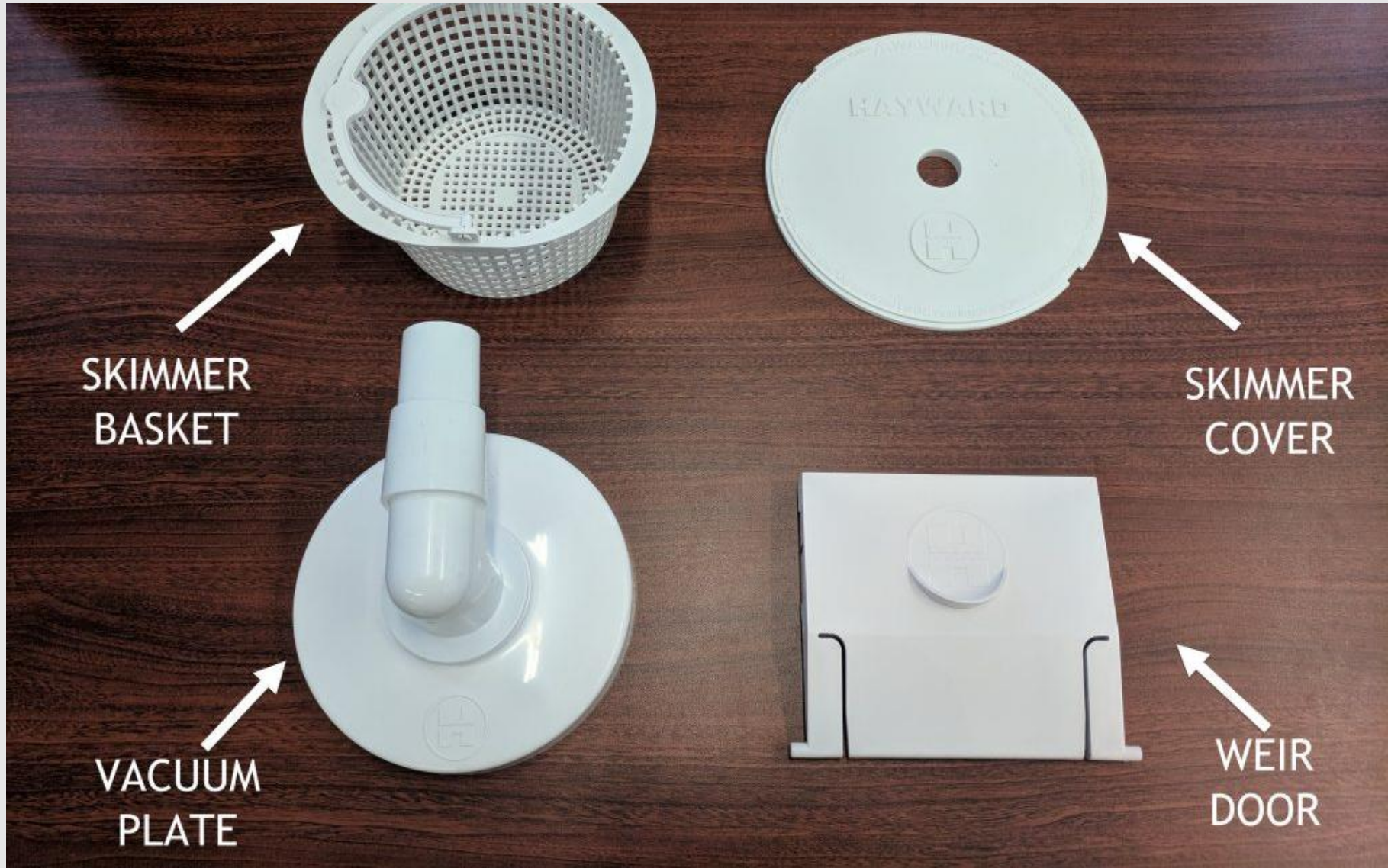


Skimmer









SKIMMER  
BASKET

SKIMMER  
COVER

VACUUM  
PLATE

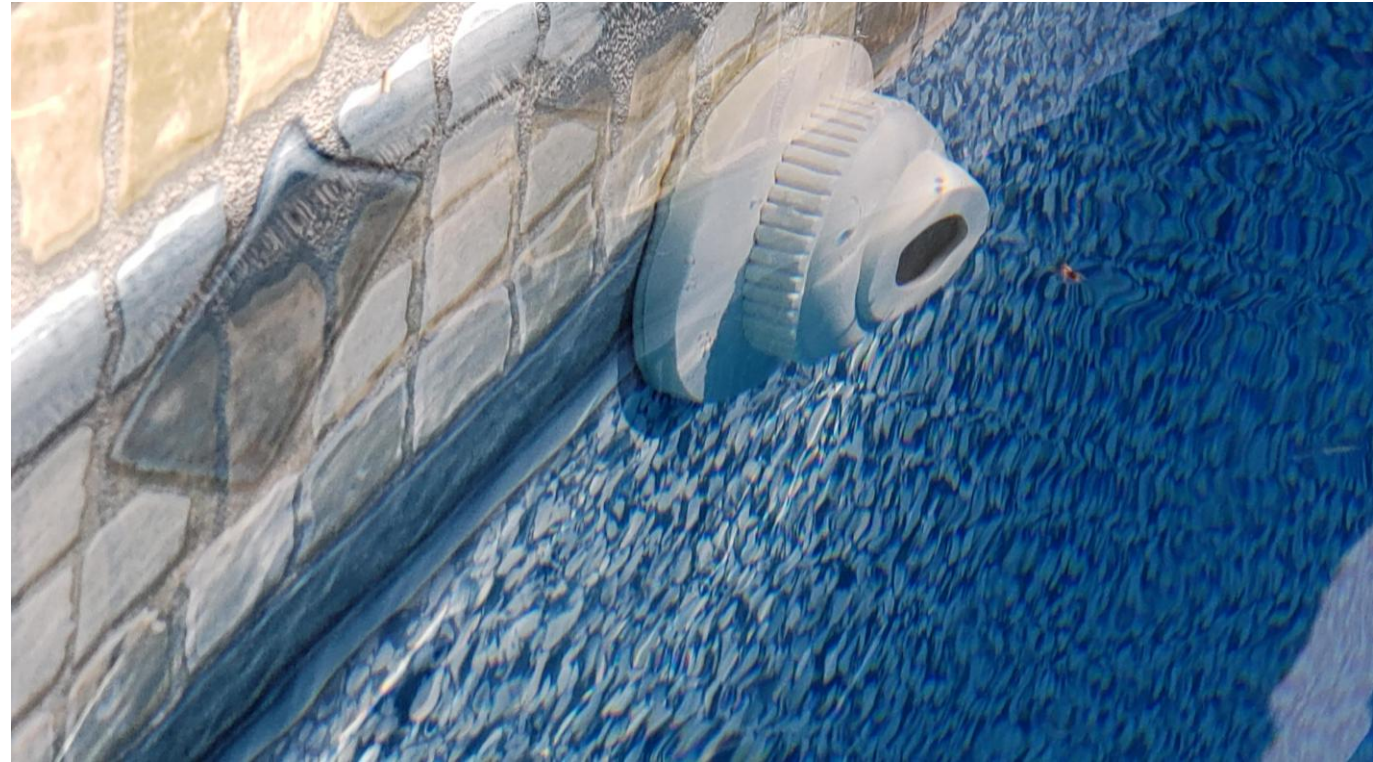
WEIR  
DOOR



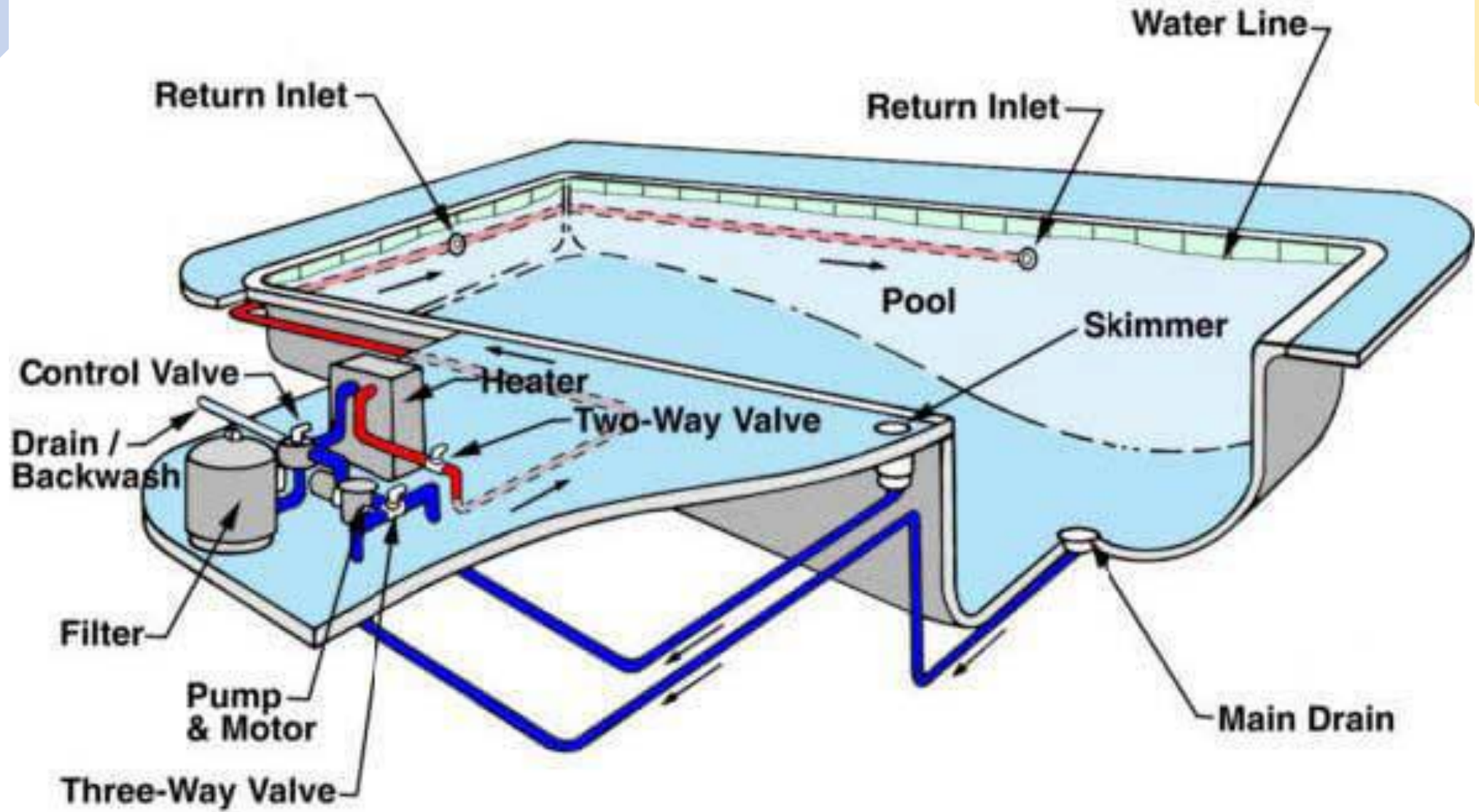


# Returns

---







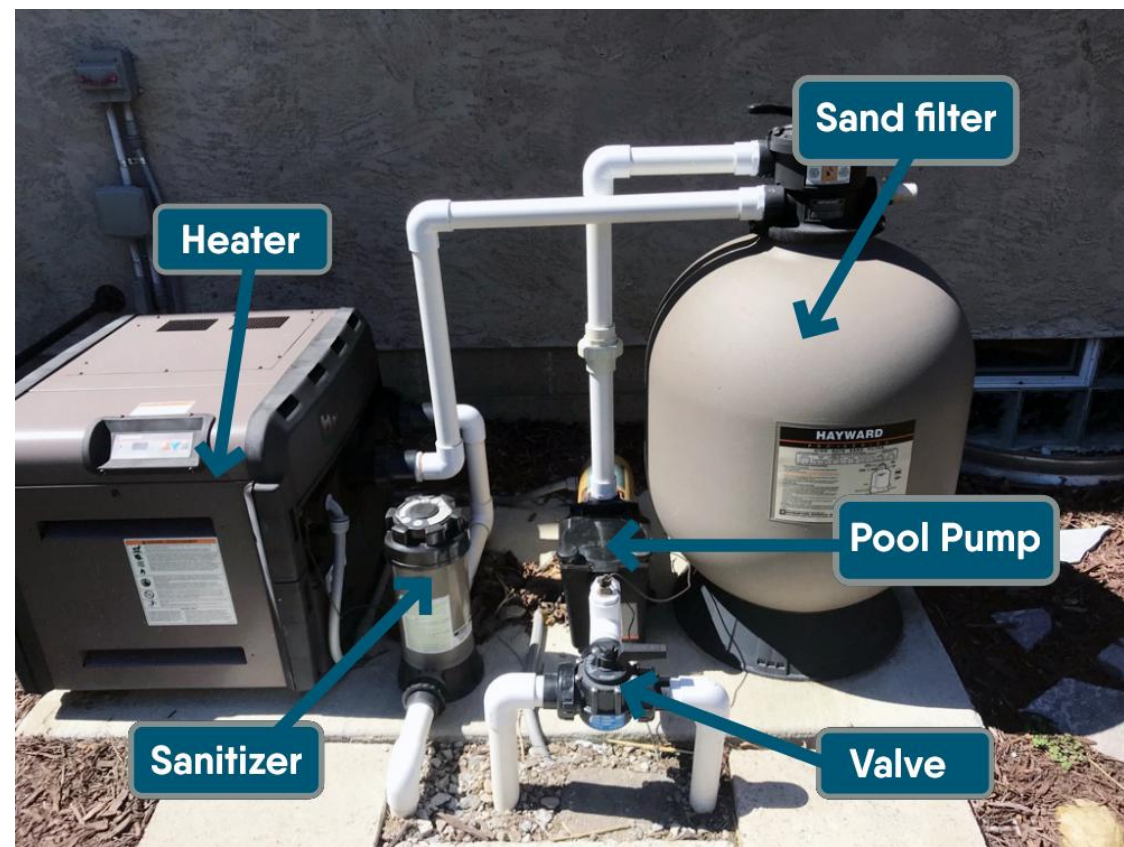
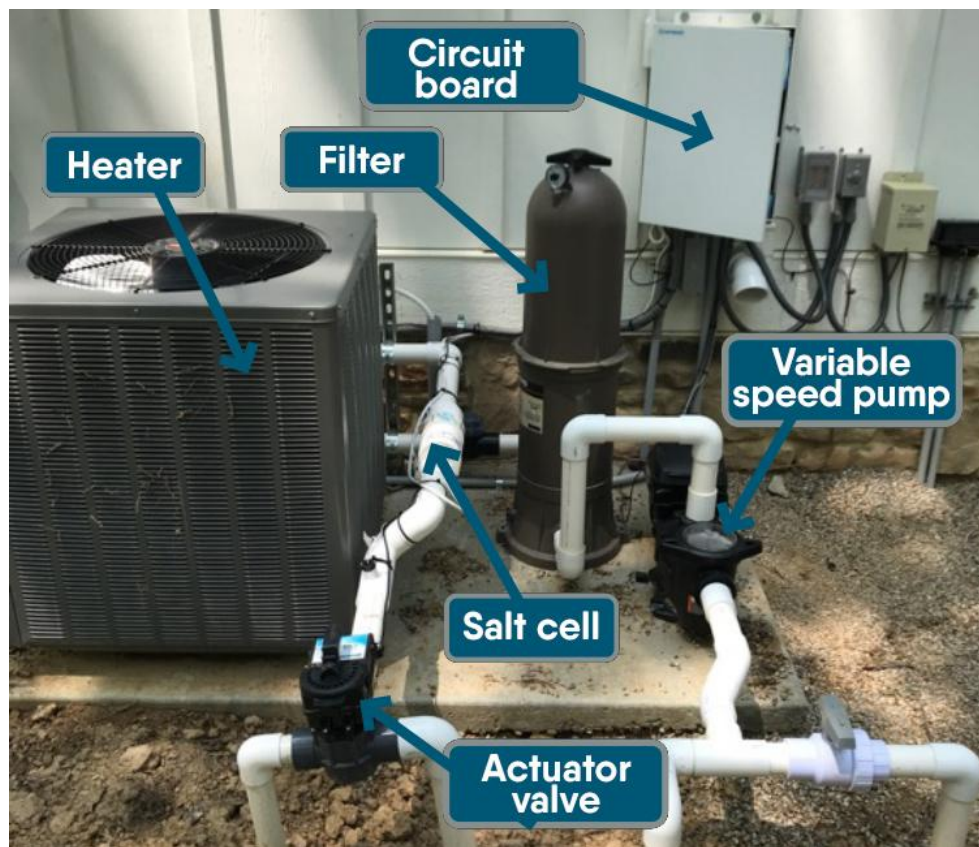




# 常见设备使用及维护



# 常见设备





Filter



**SAND FILTER**



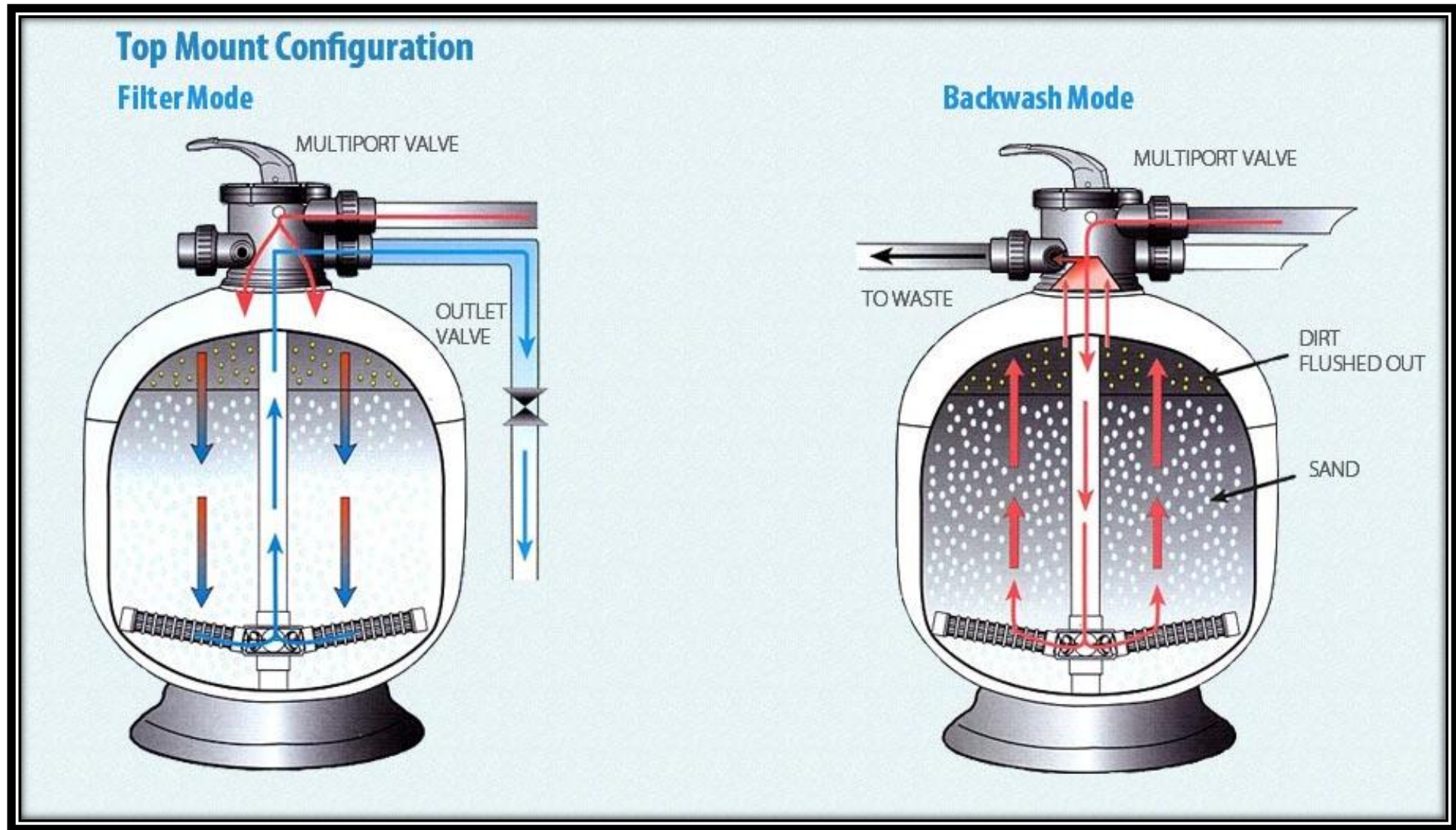
**CARTRIDGE FILTER**



**DE FILTER**



# Sand Filter







Cartridge Filter

---



DE Filter





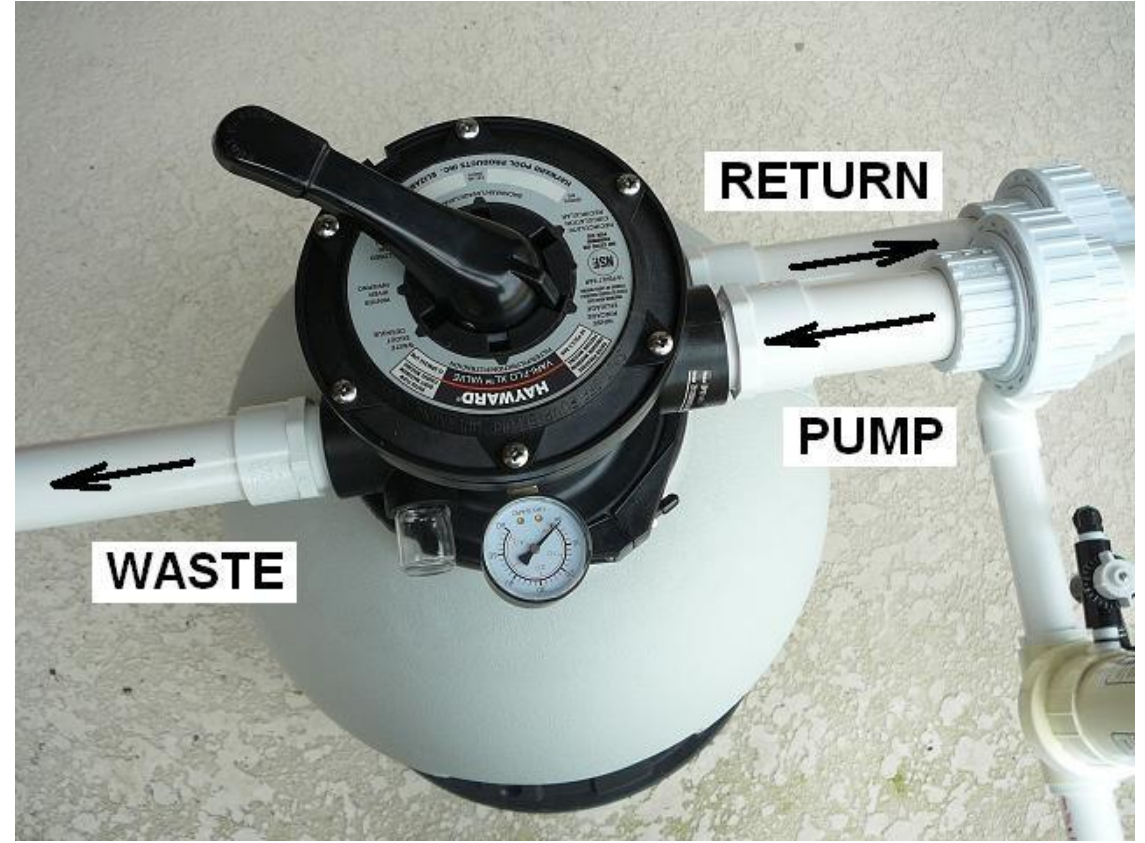
# Filter Valve





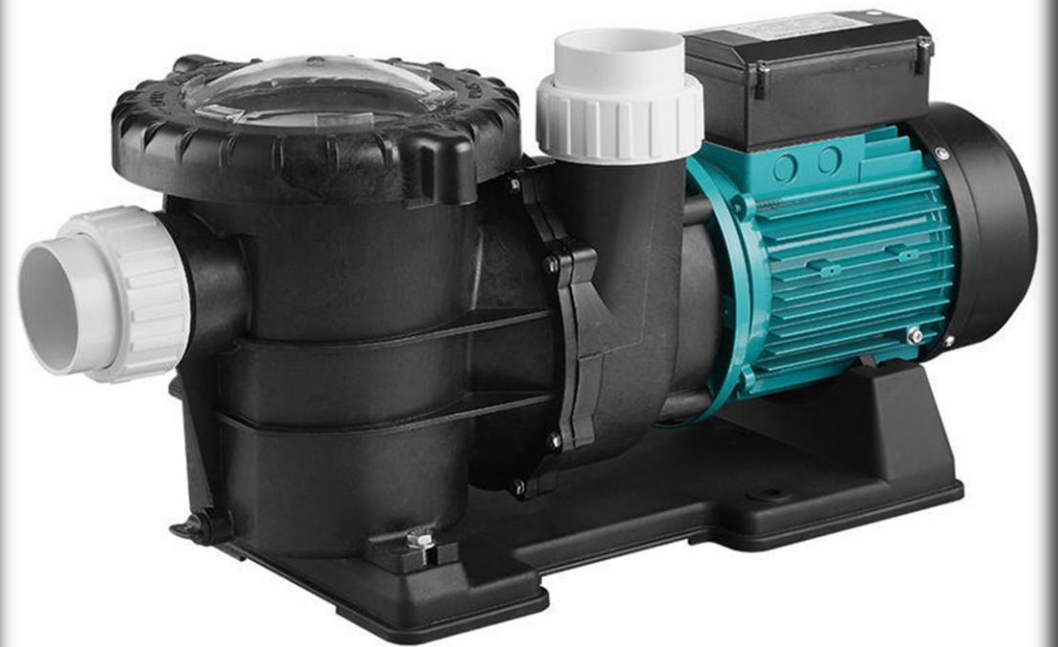
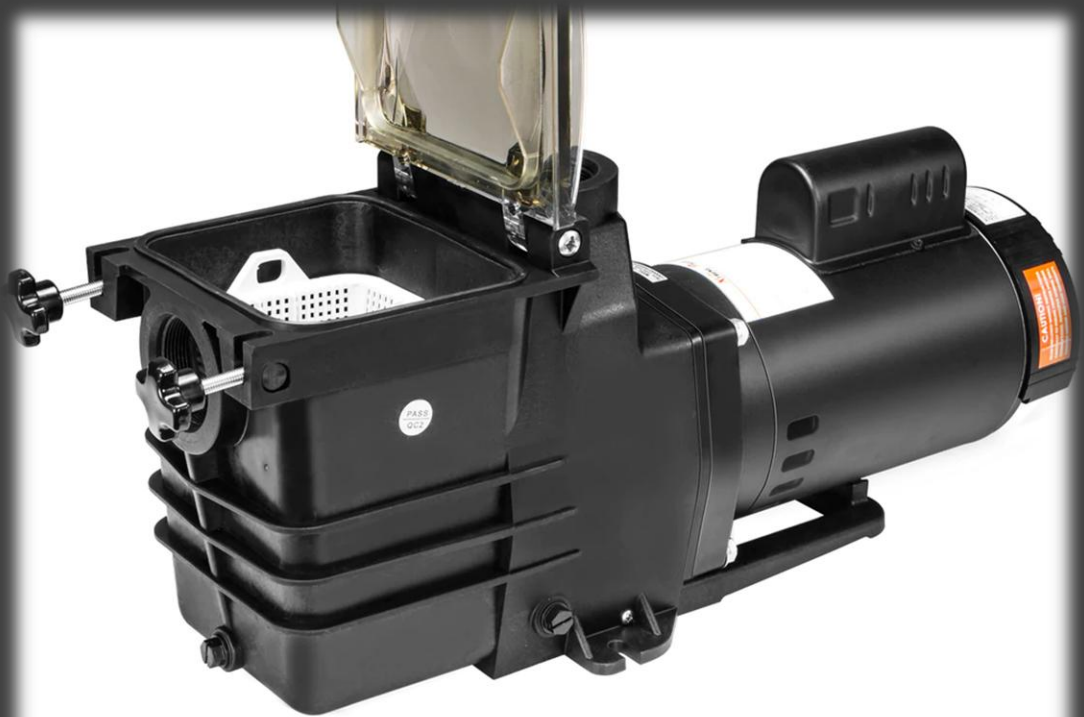
# Sight Glass & Pressure Gauge

---





# Pump



# Sanitizer





# Salt Cell



# 春季开池



任何时候都不要把泳池排空

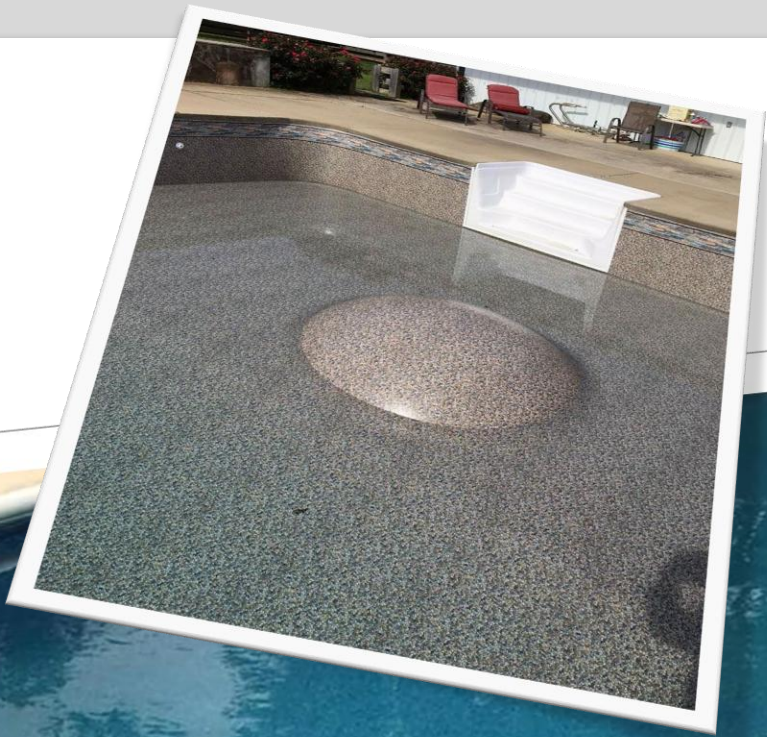
无论池水有多脏！



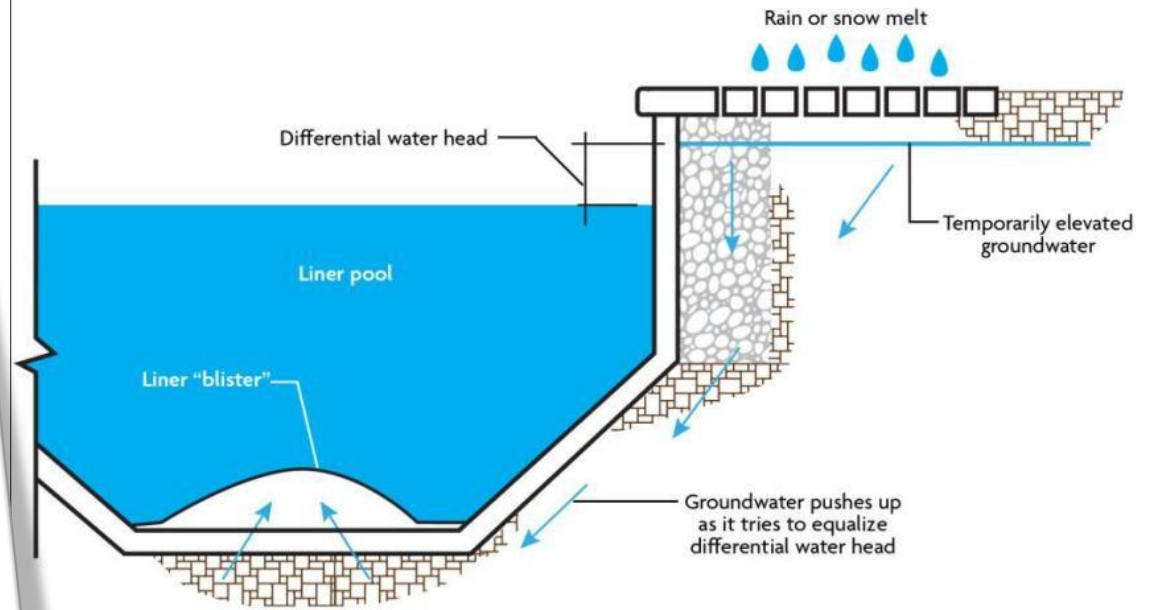








### How Hydrostatic Pressure Accumulates







# 开池步骤

连接泳池设备

取出冬季关池时的所有plugs

安装跳板, 池梯等周边设施

加水位至skimmer中线或稍高

Recirculation

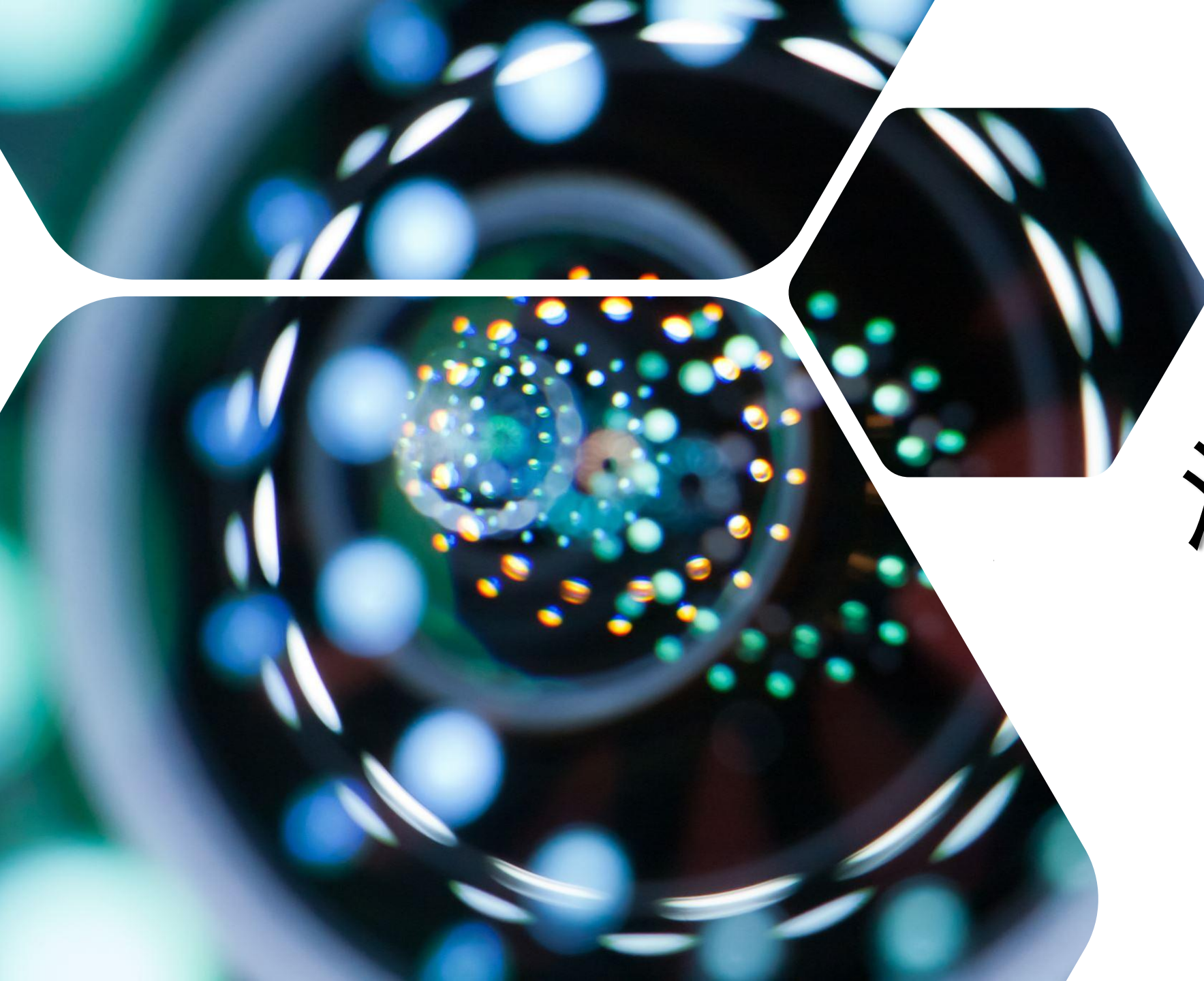
Shock treatment

# 注意事项

- 确保开池后24小时内, 循环系统始终工作, 但池水不经过filter. (期间可以大致刷一下泳池)
- 24小时后, 测试水质, 并根据结果用药
- 用药后, 再让水循环24小时  
(期间还可以刷泳池, 加沉淀剂)
- 加沉淀剂后的池水最好静置一夜
- Vacuum池底(之后, 可以让池水通过filter了)
- 测水质, 加药(反复至水质平衡)

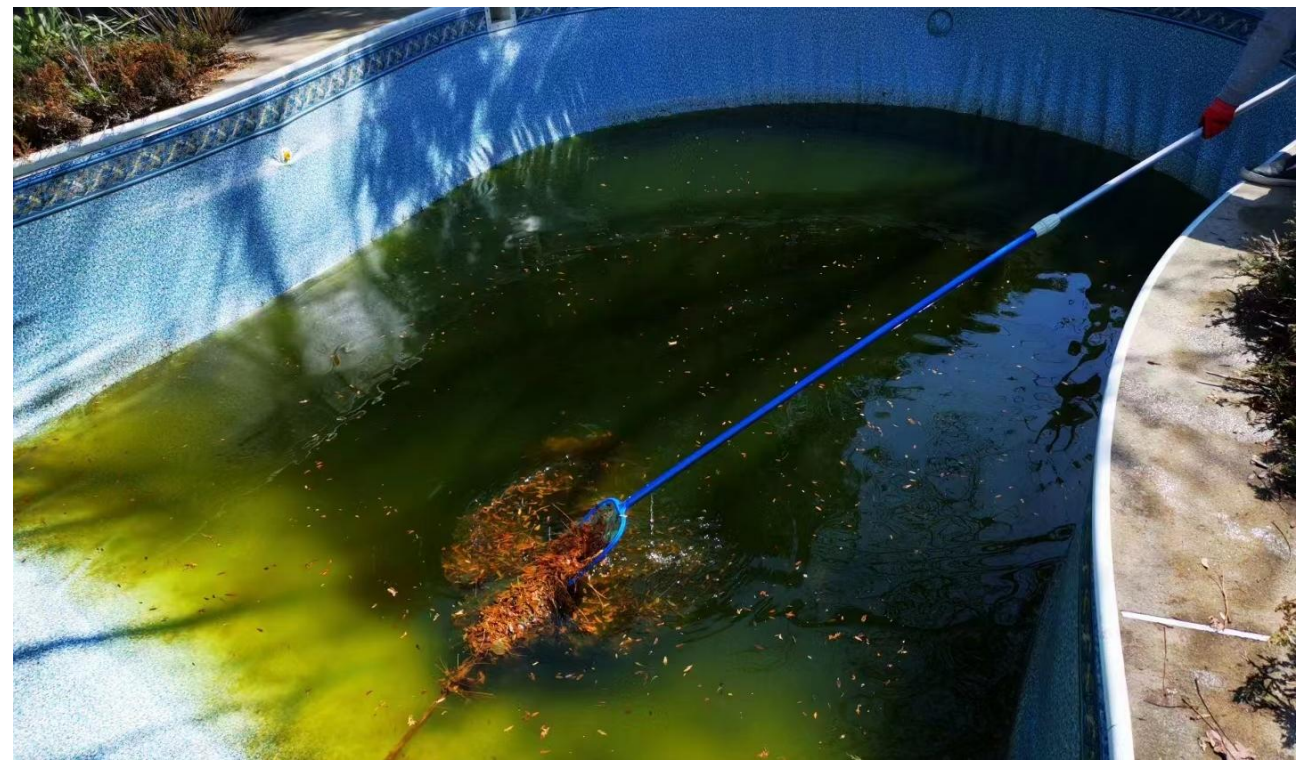




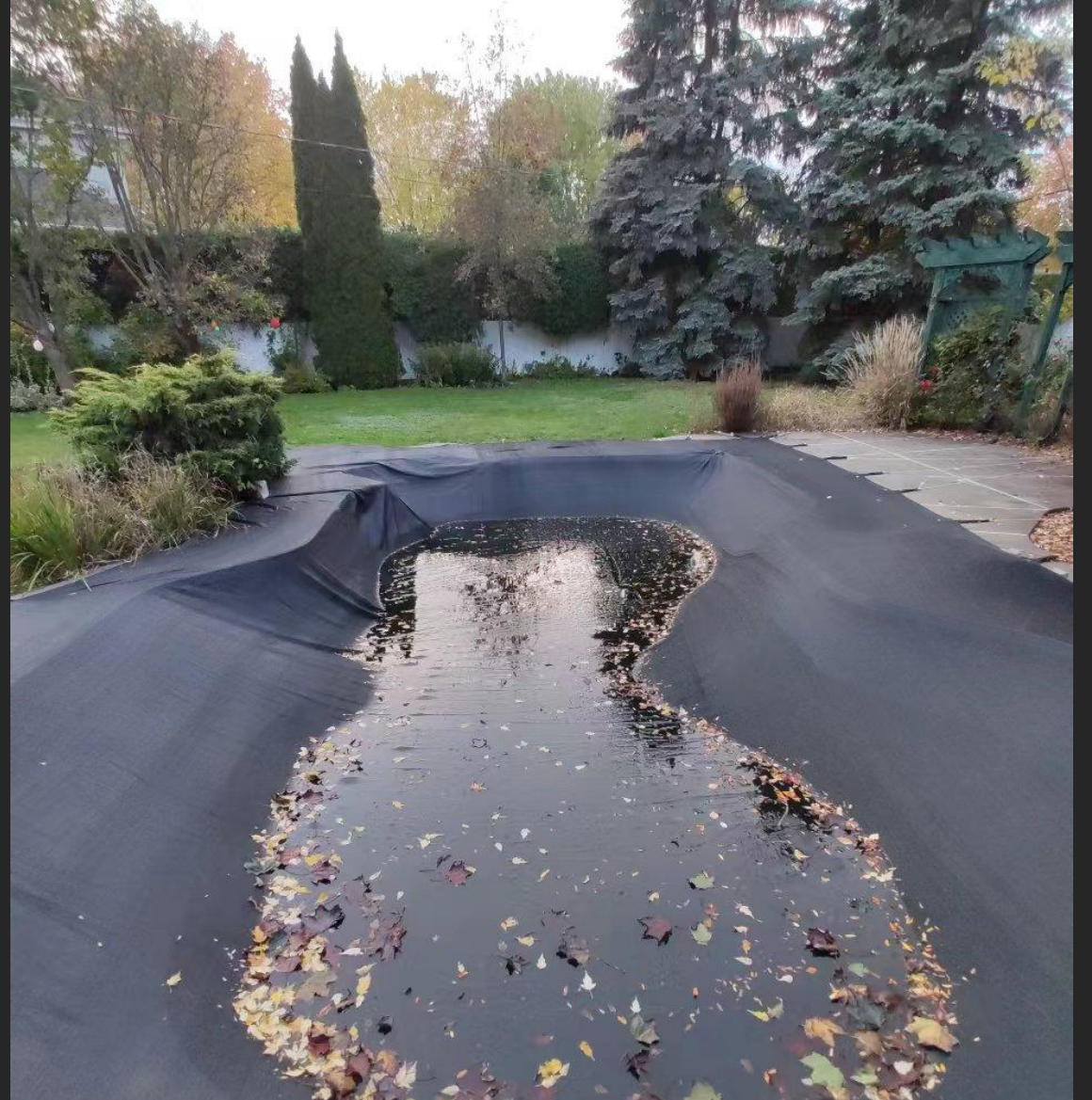


深度清洁

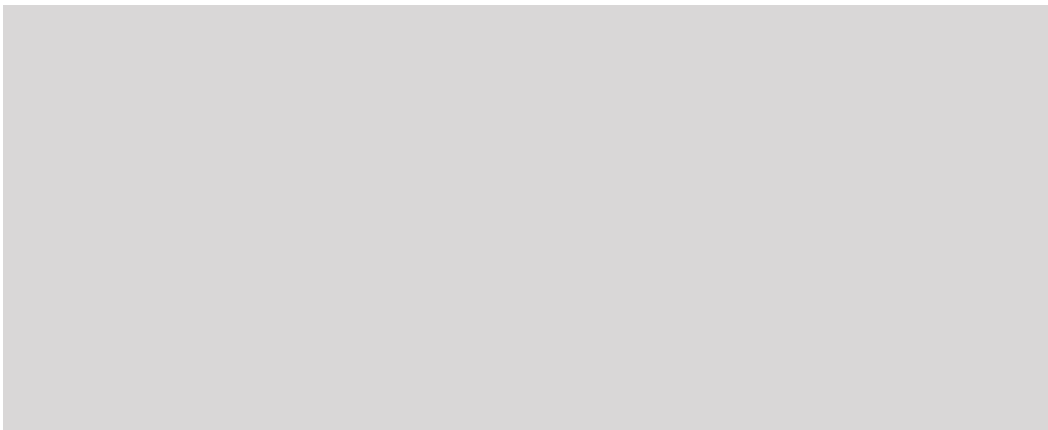








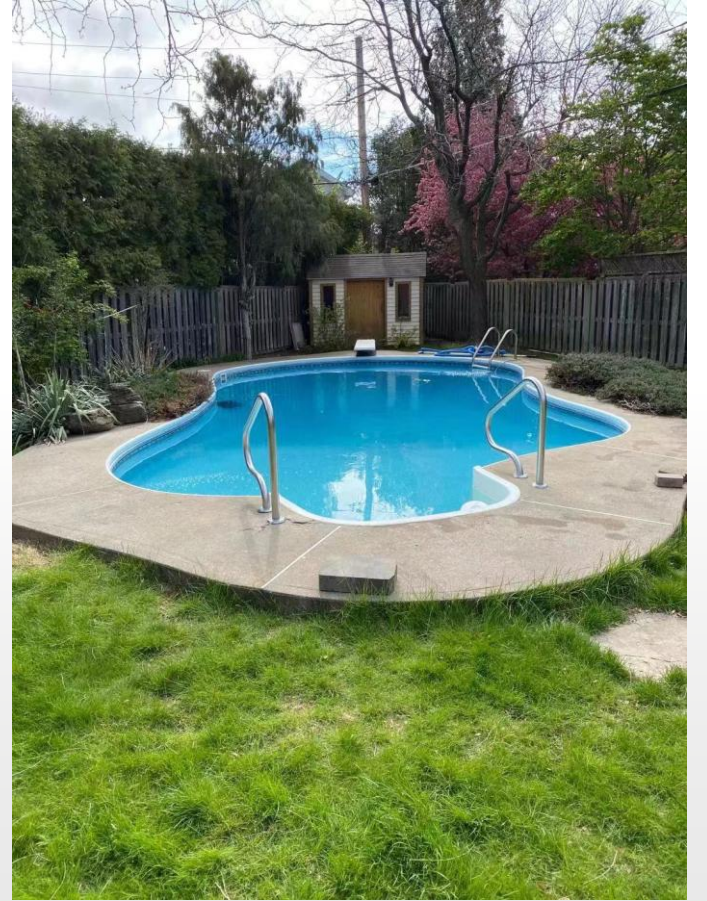




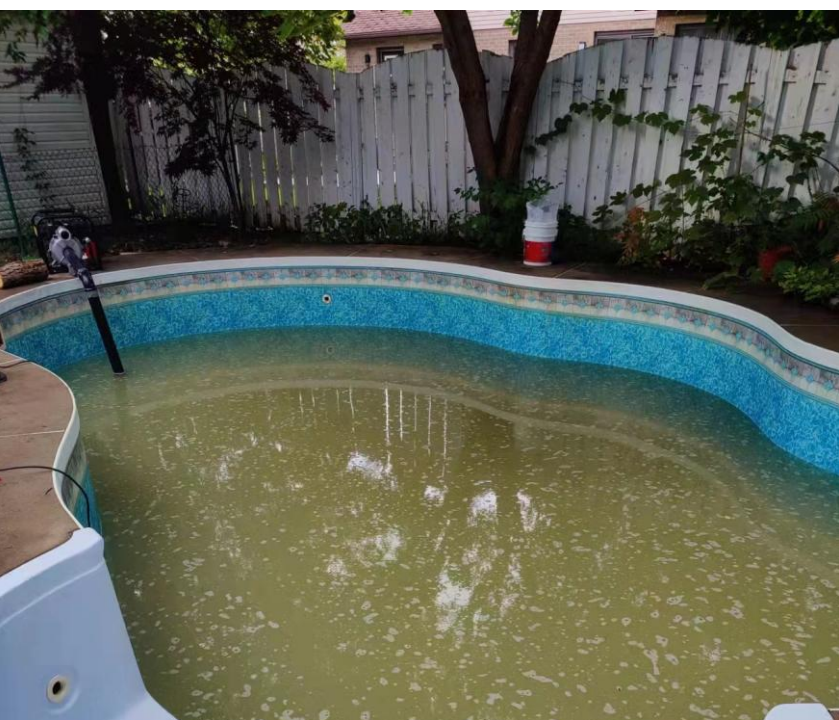


















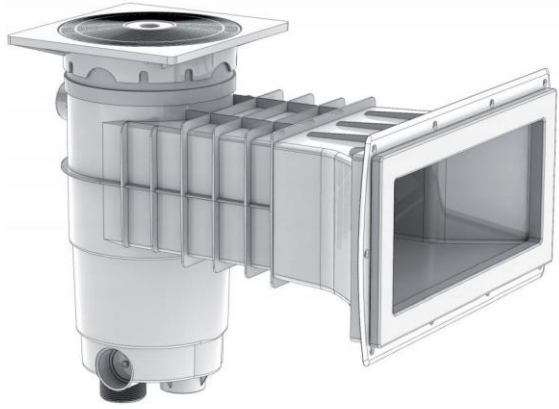




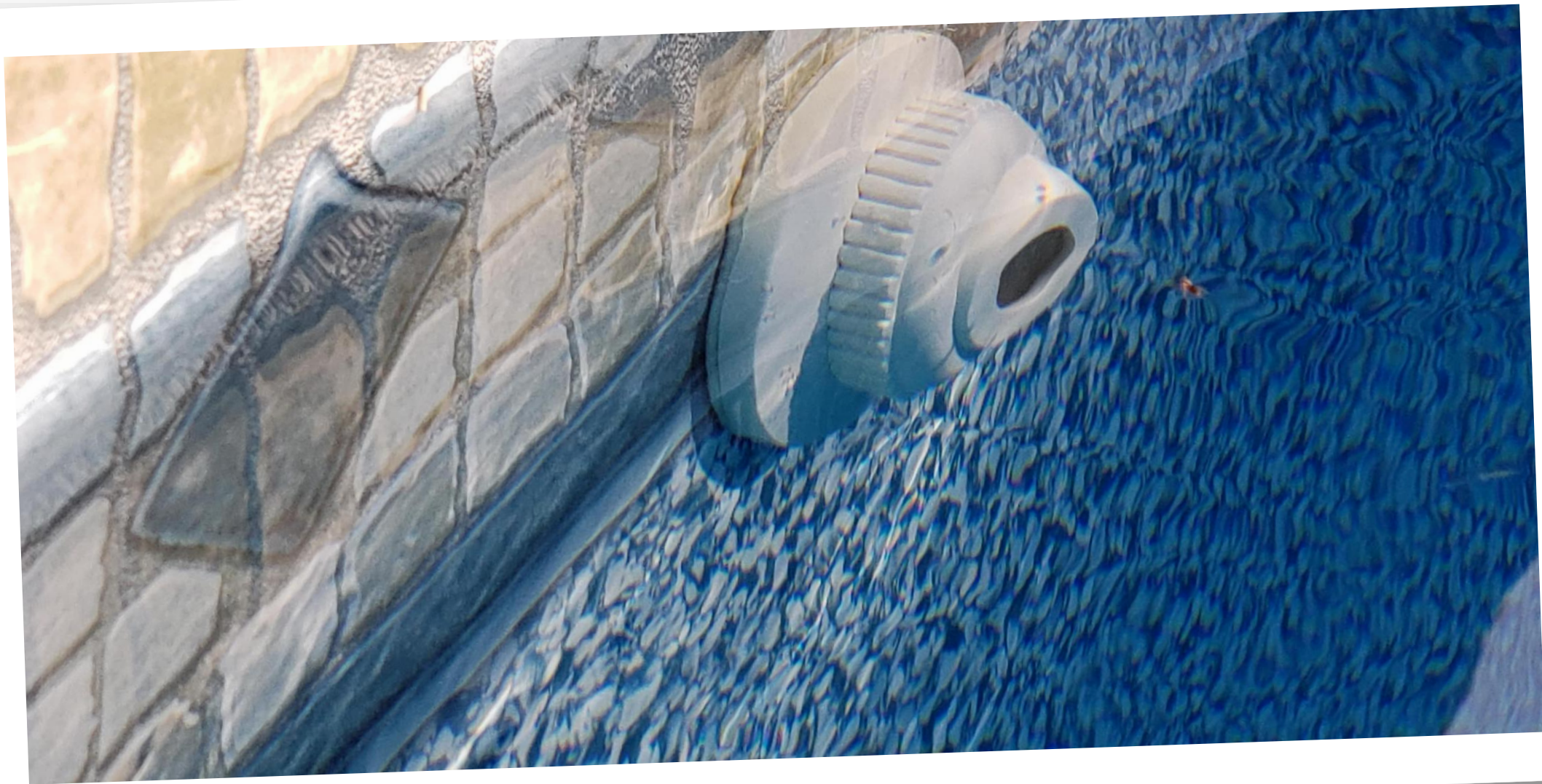


# Vacuum Pool















# 水质平衡





## 平衡水质



安全



舒适



不腐蚀设备



$$\text{Saturation Index} = \text{pH} + T_f + CH_f + ALK_f - 12.1$$



### Equivalent Factors - Langelier Saturation Index (LSI)

Temperature (°F)	Temperature Factor	Calcium Hardness (PPM)	Calcium Hardness Factor	Alkalinity (PPM)	Alkalinity Factor	Cyanuric Acid (if present)	Cyanurate Correction Factor	Total Dissolved Solids	TDS Factor
32	0.0	5	0.3	5	0.7	<b>pH</b>	<b>Factor</b>	< 1000 ppm	12.10
37	0.1	25	1.0	25	1.4	7.0	0.23	1000 ppm	12.19
46	0.2	50	1.3	50	1.7	7.2	0.27	2000 ppm	12.29
53	0.3	75	1.5	75	1.9	7.4	0.31	3000 ppm	12.35
60	0.4	100	1.6	100	2.0	7.6	0.33	4000 ppm	12.41
66	0.5	150	1.8	150	2.2	7.8	0.35		
76	0.6	200	1.9	200	2.3	8.0	0.36		
84	0.7	300	2.1	300	2.5	Note: Only use if CYA is used in your pool. Only applies to >7.0pH. If so, select correction factor based on pool pH.		Note: most calculators assume <b>12.1</b> for under 1000ppm, or <b>12.2</b> for anything over 1000.	
94	0.8	400	2.2	500	2.6				
105	0.9	800	2.5	800	2.9				



# Chemicals

Free Chlorine(1.0-3.0 ppm)

Stabilizer(30-80ppm)

pH (7.3 -7.6)

Total Alkalinity(80-160ppm)

Total Hardness(200-400ppm)

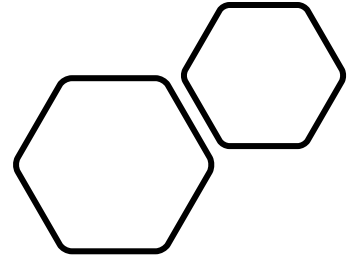
...













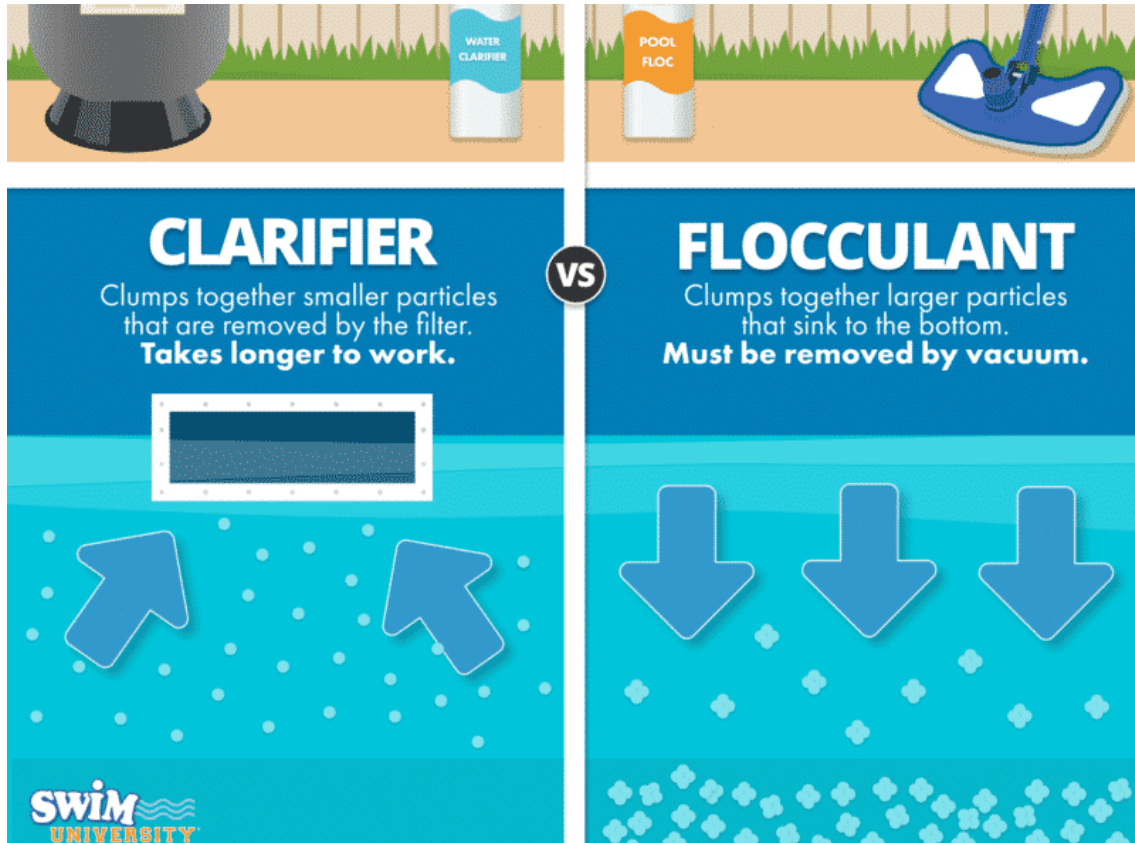
---

# 日常养护

---



# Cloudy Water



The infographic is split into two columns. The left column features a grey filter canister at the top left, a bottle of 'WATER CLARIFIER' in the center, and a diagram of a filter with two blue arrows pointing upwards from small white particles. The right column features a blue vacuum head at the top right, a bottle of 'POOL FLOC' in the center, and a diagram of three blue arrows pointing downwards from larger white particles towards a bottom layer of blue particles. A 'VS' icon is placed between the two columns.

**CLARIFIER**  
Clumps together smaller particles that are removed by the filter.  
**Takes longer to work.**

**FLOCCULANT**  
Clumps together larger particles that sink to the bottom.  
**Must be removed by vacuum.**

**SWIM UNIVERSITY**





